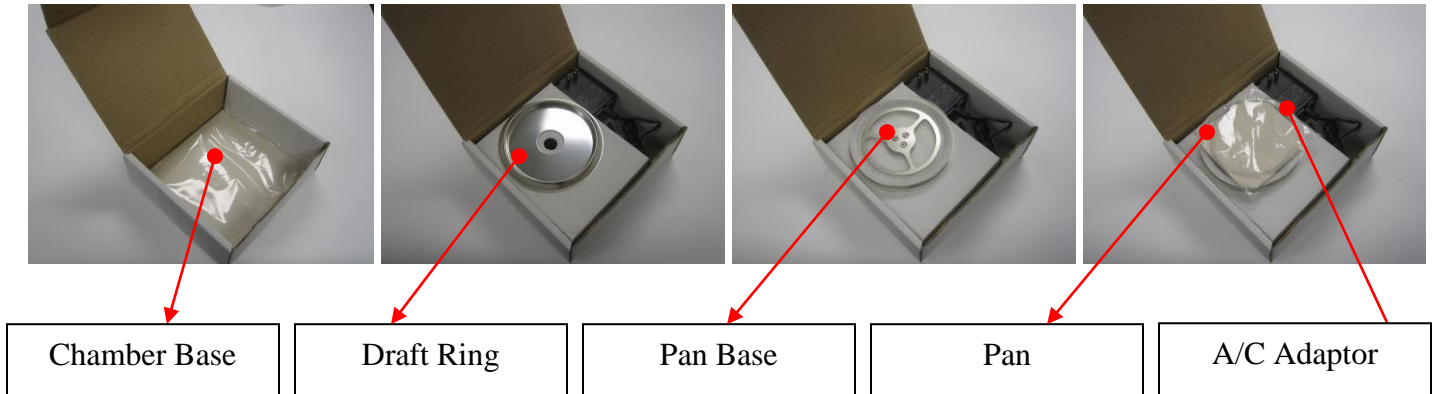
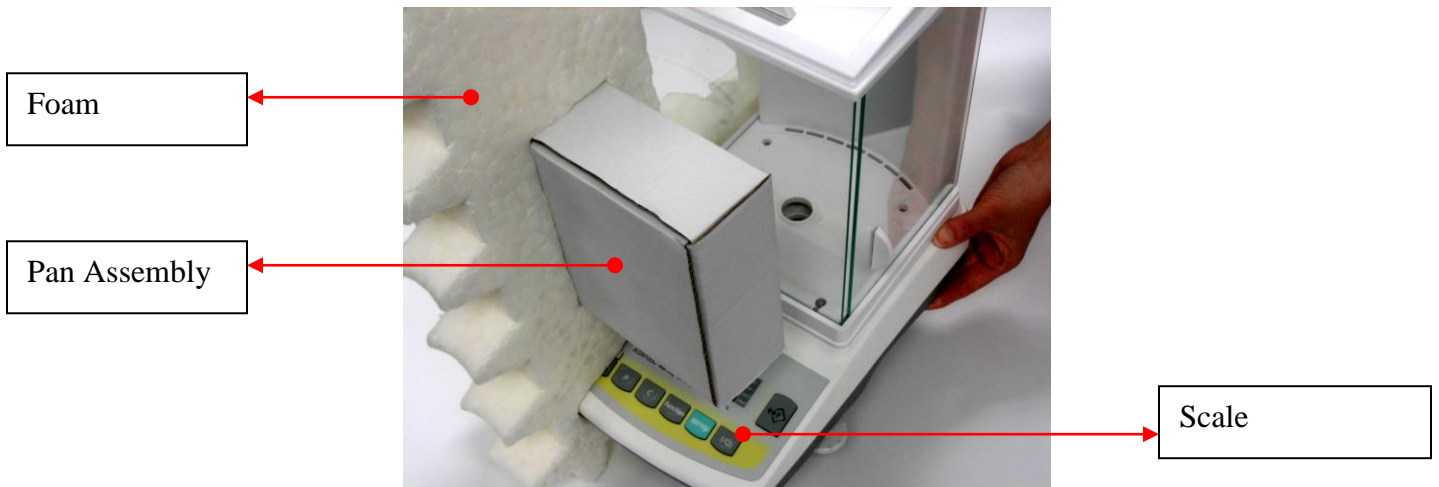


## Packing Specifications

Please retain the original packaging and use it whenever storing or transporting the scale. Always pack the scale as shown below. When packing the scale, be sure to remove the pan, pan base, draft ring and the chamber base. Shipping the scale with the pan components installed may damage the unit. Always place the items in their designated compartments, as shown below.



### Scale



**- Never Ship or Transport the Scale with Pan Components Inside of the Weighing Chamber! -**