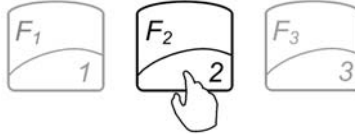


Pill Counting

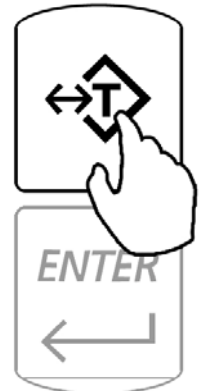
Counting prescription drugs for the first time.

Use this reference guide if this is the first time a particular drug is counted, and it has not been previously stored in the scale's database.

To enter the pill counting mode press F2.



1. Place a vial or a counting container on the pan and press T to TARE.



2. Scan the NDC code located on the supply bottle.



3. Confirm the Sample Size by pressing the ENTER key.



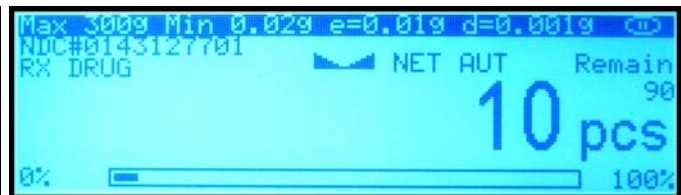
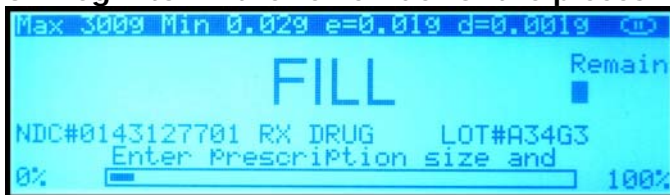
4. Manually count 10 pills and place them in the container located on the pan.



5. Press the ENTER key to confirm and accept the sample weight.



6. Begin to fill the remainder of the pieces.

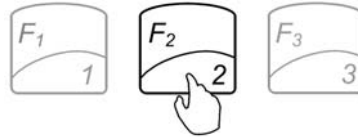


Pill Counting

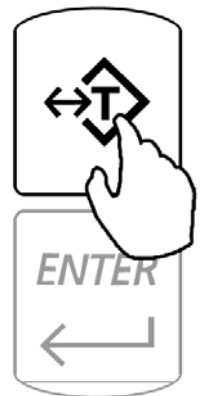
Counting prescription drugs which have been previously stored in the scale's database.

Use this reference guide if a particular drug has been previously counted on the scale, and it has been stored in the scale's database.

To enter the pill counting mode press F2.



1. Place a vial or a counting container on the pan and press T to TARE.



2. Scan the NDC code located on the supply bottle.



3. Begin to fill the remainder of the pieces.



For detailed instructions on this functions as well as additional features and modes please turn to chapter 13 of the Instruction Manual. For technical questions or assistance please call: 1-866-473-6900