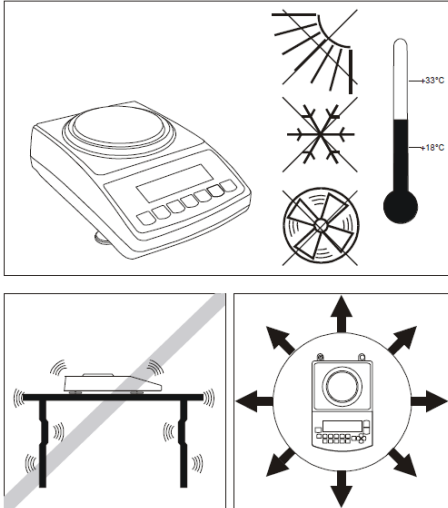


# Cautionary Notes and Precautions

Always handle your scale with care. The correct location and proper environment makes an important contribution to the accuracy of the weighing results of TORBAL precision scales.

## The optimum location for your scale:



- Stable, vibration-free base as horizontal as possible
- Away from direct sunlight
- Not exposed to high temperature variations
- Away from direct drafts
- The best location is on a stable bench away from drafts, doors, windows, radiators and air conditioner vents.

### CAUTION:



- The scale is designed for indoor use only.
- Do not operate the scale in hazardous areas or under dangerous conditions.
- Do not use the scale in locations subject to high humidity or dust.
- Do not connect cables in ways other than those mentioned in this manual.
- Set the scale on a firm, stable, horizontal surface.
- Never stand on or lean on this product. Equipment may fall or collapse, causing breakage and possible injury.
- Before moving the product, unplug it and unplug all cables connected to it.
- When storing, transporting or returning the scale for service, always use the original packaging.

### WARNING:



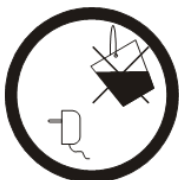
- Never attempt to repair, disassemble or modify the scale. Tampering with the scale may result in injury and cause greater damage to the equipment.
- Be sure to use the specified power source.
- Do not allow foreign matter to fall onto the scale.
- If water or other liquid spills onto the scale, unplug the power cord immediately and contact technical support.



Damaged batteries must be handled with extra care. Use rubber gloves and safety glasses. Dispose only in designated recycling centers.



Always disable charging before installing disposable batteries. Charging non-rechargeable, alkaline batteries can be hazardous and cause damage to scale.



Always keep the scale and the power supply from water or other liquids.



Disposal of electronic equipment in waste containers is forbidden by law.