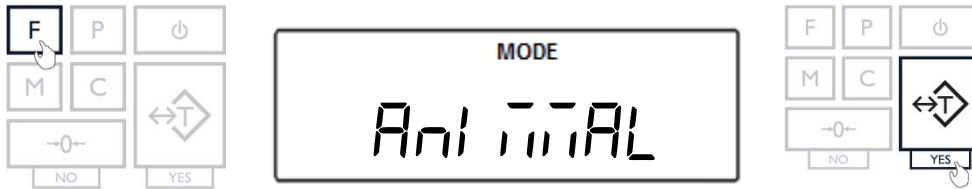


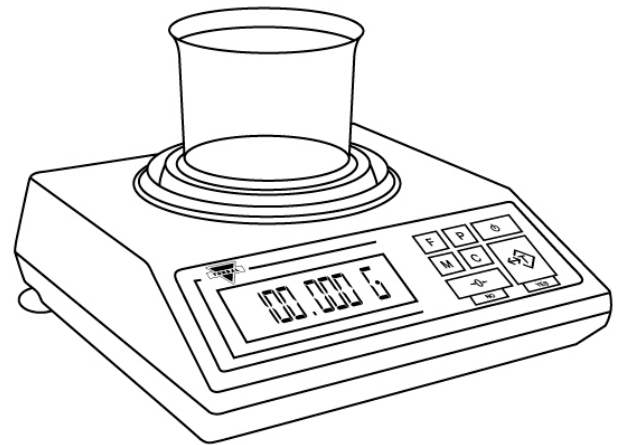
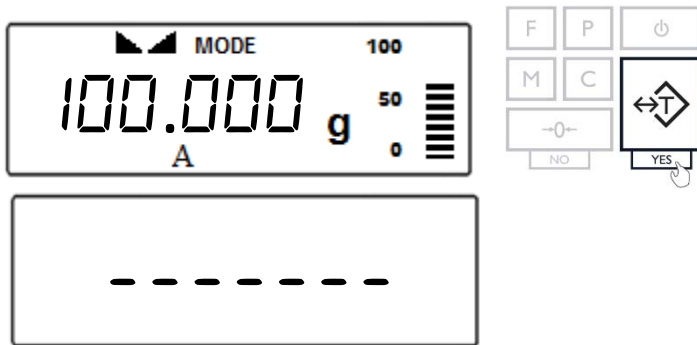
Animal Weighing (ANIMAL)

Animal weighing is used to weigh live animals and other dynamic loads. A choice of 3 different operating modes and 4 different weight integration periods ensures the user the best results in the least amount of time per measurement. An “A” indicator will appear on the screen to indicate the scale is in Percent Weighing mode.

1. To enter Animal Weighing Mode, press the “F” key. Select “ANIMAL” by pressing the “T” key.



2. Place an empty weighing container on the pan. The container's weight will be displayed. Wait for the weight to stabilize and press the “T” key to tare.

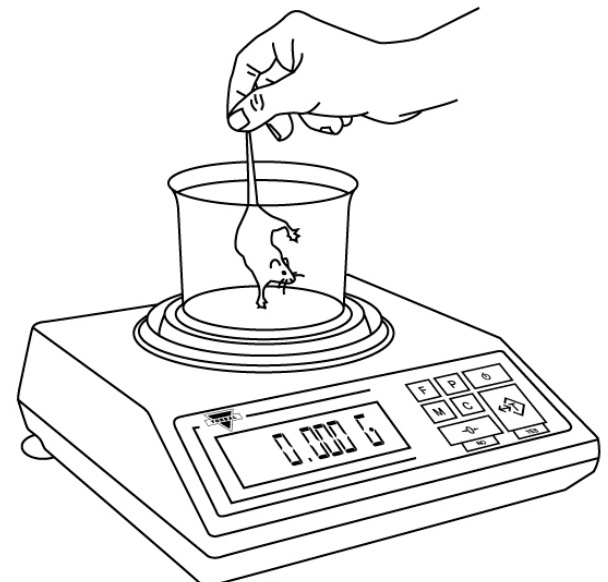


3. Once the scale has been tared, carefully place the animal into the container.

Automatic and Semi-Automatic:

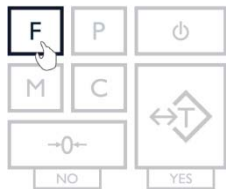
When set to Automatic or Semi-Automatic, the scale will automatically begin the animal weighing process with the first weight reading.

Note: In Automatic and Semi-Automatic modes the minimum weighing mass must be equal to or greater than 10d. To see this limit expressed in grams turn to detailed specifications in Chapter 2.

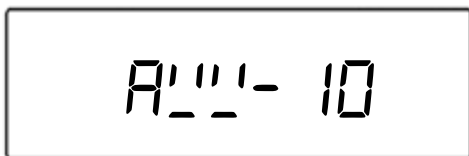
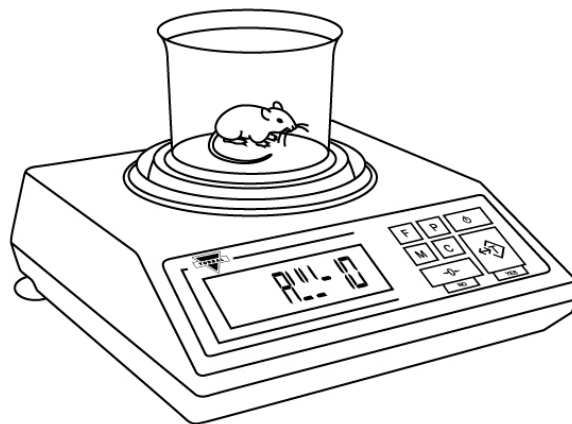


Manual:

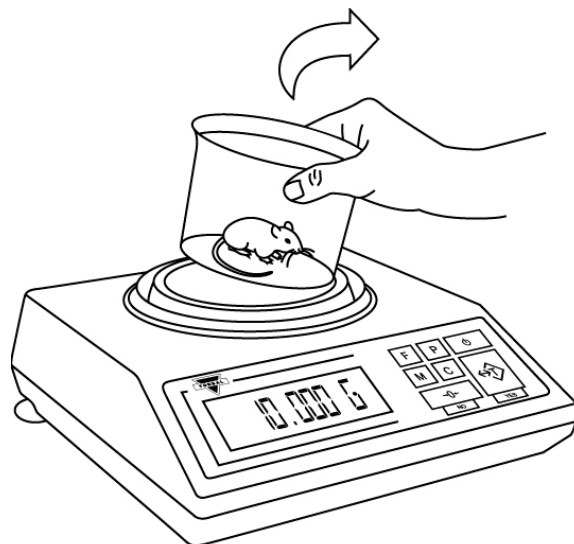
When set to manual, animal weighing must be initialized manually by pressing the “F” key.



- Once the animal weighing process is initialized, the scale will display the time interval that was selected in the configuration mode and begin counting down. During the time interval the scale will record weight readings of the animal and calculate its average weight.



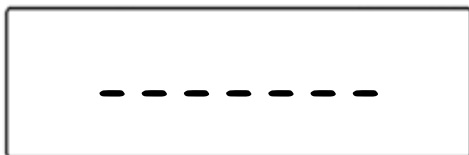
- After the time interval has elapsed the result will be displayed. The animal can now be removed from the pan.



- Clear the display.

Automatic:

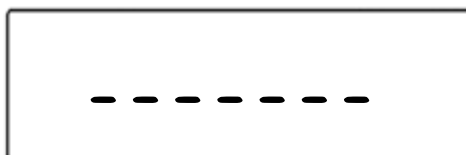
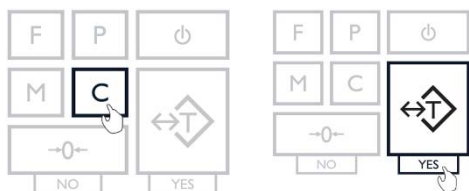
When set to Automatic, the result will be automatically cleared after the animal is removed. The scale will perform an automatic tare and prepare for the next weighing.



Note: If the weighing container is changed the scale must be tared manually by pressing the “T” key.

Semi-Automatic and Manual:

When set to Semi-Automatic or Manual, the weighing result will remain displayed and it must be manually cleared after the animal has been removed. To clear the weighing result, press the “C” key. After the result has been cleared, tare the scale by pressing the “T” key.



- To exit animal weighing, press the “C” key to clear the function.

